

MET/CAL® Plus Version 7 Metrology Software Computer Based Training

A two-part course on a CD-ROM that covers the basic operation of MET/CAL® Plus, and the use of Crystal Reports® with MET/CAL.

General Technology Workshops

The Computer Based Training CD contains two complete, interactive training courses on a CD-ROM. The courses will provide you with a fundamental understanding of how to operate MET/CAL® Plus Version 7 Calibration Software and how to create MET/CAL reports with Seagate Crystal Reports® Version 8.0.

The CD consists of: Understanding MET/CAL Version 7

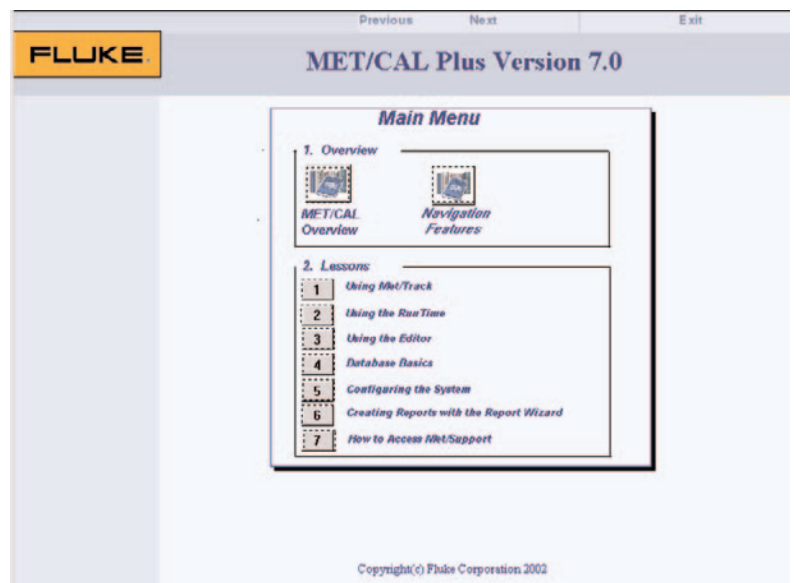
The six lessons in this course take you through the steps to set up and operate your MET/CAL calibration system.

Creating Reports for MET/CAL

This course also has six lessons showing the basic operation of Seagate Crystal Reports to create reports and obtain data from the MET/CAL database.

Interactive and easy-to-use formats are only a few of the features

- Familiar Web interface for easy learning
- Simulated MET/CAL screens to "get the feel" of the software
- Many animated screens to show the operation of MET/CAL
- On-line manuals for quick reference



- Sample MET/CAL Version 7 software is included
- Book marking allows return to a page if you must exit and start again
- Quizzes to verify the learning process
- If a course is completed successfully, a completion certificate is printed

Advantages of Computer Based Training

Computer Based Training (CBT) provides you with a cost-efficient and convenient way to learn the basics of using MET/CAL and Crystal Reports. You may use the CBT to supplement instructor-led courses or gain an overview of

the new features of your Version 7 upgrade. This dynamic CBT provides you with the training you need when you need it.

- *Better class training and preparation* – get a jump start on your MET/CAL classroom training
- *An ongoing reference guide* – the CBT is an excellent reference that you can turn to if you need a refresher on MET/CAL
- *Choose the learning pace that is right for you* – screens with a familiar web browser interface lead you through 12 lessons, each with a self administered test of the student's knowledge

Understanding MET/CAL Version 7

Course outline

Lesson 1 –

Using MET/TRACK

- How to add assets, calibration records, and location records
- How to run reports

Lesson 2 –

Using the "Run Time"

- How to use the Run Time application
- How to select a procedure, run the procedure and print the calibration data and certificate

Lesson 3 – Using the 'Editor'

- How to create a simple calibration procedure, and run the procedure
- How to set the procedure flags

Lesson 4 – Database Basics

- Explains a relational database and how MET/CAL uses this database to store and retrieve data
- How the database tables are structured and how they store data

Lesson 5 –

Configuring the System

- How to configure MET/CAL software using the Database Setup application
- How to add users, set levels of field activity, configure data screens, and add data validation

Lesson 6 – Creating Reports with the Report Wizard

- Shows use of the Crystal Report Wizard to create a simple report

Creating Reports for MET/CAL

Course outline

Lesson 1 – Customizing

Crystal Reports for use with MET/CAL

- Learn how to optimize Crystal Reports for use with MET/CAL

Lesson 2 – Getting to Know Crystal Reports

- Teaches the components of Crystal Reports
- Shows the basic operation of each screen

Lesson 3 –

Creating a Simple Report

- Shows the fundamental steps to create a report to be used by MET/CAL

Lesson 4 –

Using Parameter Fields

- Shows how to set up a report to prompt for inputs
- Shows how to use a parameter in the record selection formula

Lesson 5 –

Using Formulas in Reports

- Shows use of formulas to select data for the report
- Shows use of conditional formulas

Lesson 6 – Creating Reports Using Stored Procedures

- Details use of stored procedures in the database
- Shows how to use stored procedures to create a report

Course Completion Time

Approximately six hours are estimated for completion of both courses.

Ordering Information

MET/CAL-CBT7

Computer Based
Training

System Requirements

Personal computer with Pentium 233 MHz or higher, 64 MB of RAM, 15 MB hard disk space available, VGA display with 600 x 800 resolution set to at least 256 colors and small fonts, and CD-ROM drive 12x or higher.

Fluke. Keeping your world
up and running.

Fluke Corporation

PO Box 9090, Everett, WA USA 98206

Fluke Europe B.V.
PO Box 1186, 5602 BD
Eindhoven, The Netherlands

For more information call:
In the U.S.A. (800) 443-5853 or
Fax (425) 446-5116
In Europe/M-East/Africa (31 40) 2 675 200 or
Fax (31 40) 2 675 222
Canada (800)-36-FLUKE or
Fax (905) 890-6866
Other countries (425) 446-5500 or
Fax (425) 446-5116
Web access: <http://www.fluke.com>

©2002 Fluke Corporation. All rights reserved.
MET/CAL is a registered trademark of Fluke Corporation. Crystal Reports is a registered trademark of Seagate Software, Inc.
Printed in U.S.A. 11/2002 1605381 E-ENG-N Rev B
Printed on recycled paper.